

Degree Requirements

- 31 credits** RN-BSN nursing courses (9)
- 9 credits** Additional upper division credits (300-400 level) transferred in or from MSUM
- 80 credits** Transferred from AD nursing, electives, gen eds (Note: only 10 gen. ed. goal areas at MSUM).

120 credits Total requirements for BSN degree

RN-BSN Curriculum

(L = Clinical, independent experiences planned in your living/working community)

- Nurs 301** Transitions (4 credits)
- Nurs 303** Family Health Nursing (4 credits)
- Nurs 342** Nursing Care of Diverse Populations (2 credits)
- Nurs 348L** Public Health Nursing (4 credits)
- Nurs 370** Nursing Research and Evidence-Based Practice (4 credits)
- Nurs 420** Gerontological Nursing to Promote Successful Aging (3 credits)
- Nurs 450** Applied Pathophysiology (4 credits)
- Nurs 472** Nursing Leadership and Professional Development (3 credits)
- Nurs 473** Professional Pathways (3 credits)

31 required Nursing credits (in 9 courses)

Application Info

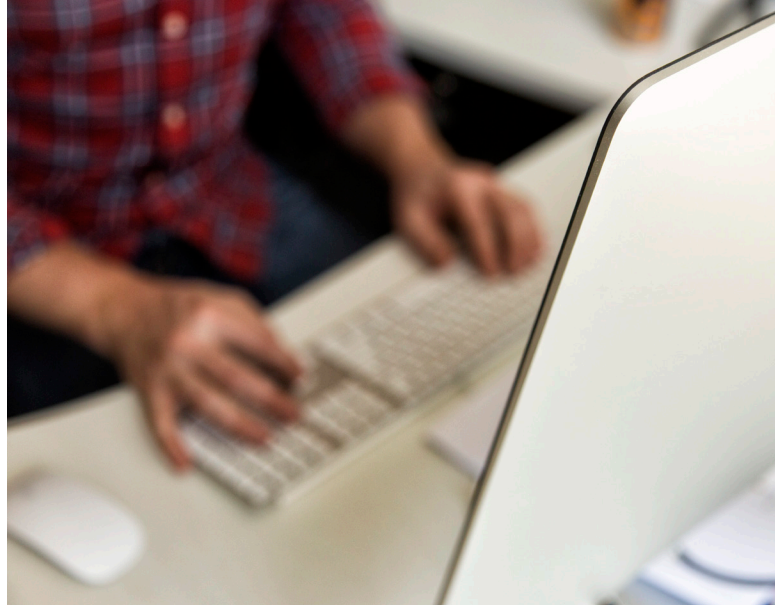
Applications to the program are reviewed on a monthly basis. Check out our website, connect with us, and apply for admission today!

Website: mnstate.edu/nursing

Phone: 218.477.2693

School of Nursing & Healthcare Leadership Department | PO Box 107
MSU Moorhead
1104 7th Avenue South
Moorhead, MN 56563

 [MSUMSNHL](https://www.facebook.com/MSUMSNHL)  [@MSUMSNHL](https://twitter.com/MSUMSNHL)



Minnesota State University Moorhead

ONLINE RN-BSN PROGRAM

The RN-BSN program at MSUM is accredited by the Commission on Collegiate Nursing Education (<http://www.ccnaccreditation.org>).

Take Your Career Further!

mnstate.edu/nursing



MINNESOTA STATE UNIVERSITY
MOORHEAD®

A member of the Minnesota State system

Minnesota State University Moorhead is an equal opportunity educator and employer. This information will be made available in alternate format, or if a disability-related accommodation is required, please contact Accessibility Resources at 218.477.4318 (voice) or 1.800.627.3529 (MRS/TYY).

The MSUM Advantage

The MSUM RN-BSN program is for adult learners who have an associate degree in nursing wishing to advance in the nursing profession.

- ▶ **Academic Flexibility.** Create your unique, adjustable program plan. Rolling admissions and intentional flexibility let you proceed at your pace and in your timeframe.
- ▶ **Accelerated Progression.** Partner with your faculty academic advisor to guide you on the most efficient path to your BSN. Compared to other regional RN-BSN programs, our program is flexible, credit-efficient, and economical!
- ▶ **Smartly Affordable.** Our RN-BSN degree is one of the most affordable, high-quality and long-standing programs in the country. At a state tuition rate with no hidden fees, your MSUM degree is a value beyond any in the region. Your total cost depends on your unique college history.
- ▶ **Local Placements.** Your experiential learning components take place near where you live and work, in your home community.

Meeting Your Needs

Our student-centered faculty have a strong history in nursing practice, are specialty credentialed, and embrace an adult education philosophy for online learners. They are dedicated to meeting your needs and understand the RN base from where you begin.

- ▶ **Rolling Admissions.** Applications to the program are reviewed on a monthly basis.
- ▶ **Adjustable Advancement.** All required nursing courses are offered in fall or spring semesters with some in summers as well. You may progress as quickly or as slowly as you wish, allowing you to balance family, work, and study.
- ▶ **Online and Asynchronous.** The nursing program is delivered 100 percent online and is asynchronous – meaning you pick the time you'll study.
- ▶ **Professional Development.** If graduate education is in your career plan, MSUM offers the Master of Science (MS) degree in Nursing with specialization areas for nurse educators and managers/leaders.

RN-BSN Admission Requirements

1. Admission to MSUM
2. Separate application to the RN-BSN program
3. A majority of qualified applicants have an overall GPA greater than 2.75, however applications are evaluated holistically on a number of criteria (see website).
4. Current RN license (or scheduled to take NCLEX)
5. Two professional references
6. Goal statement essay

